

HEY RUBE

A full-page illustration of a young man, Rube, standing in a field. He is wearing a light blue checkered shirt and dark trousers. He holds a straw hat in his right hand and a pitchfork over his left shoulder. He is looking towards the viewer. The background shows a field with a haystack on the right and a cloudy sky. There is some faint, purple, mirrored text on the right side of the illustration, possibly a bleed-through from the reverse side of the page.

MARCH TWO STEP

BY NELLIE STOKES

NO. 5

JEROME H. REMICK & CO.
DETROIT NEW YORK

HEY RUBE.

CHARACTERISTIC MARCH & TWO STEP

N. M. STOKES.

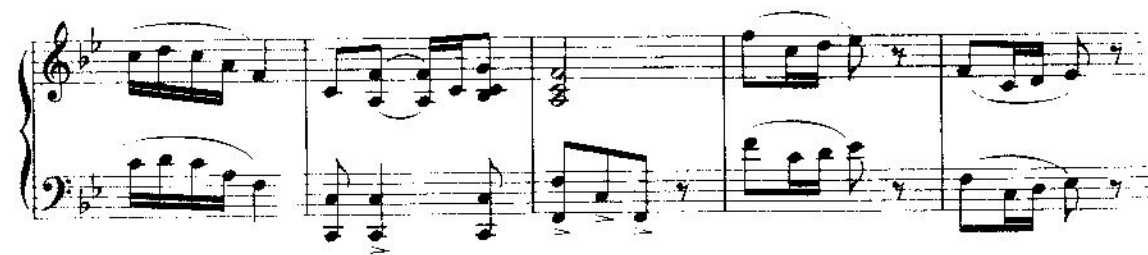
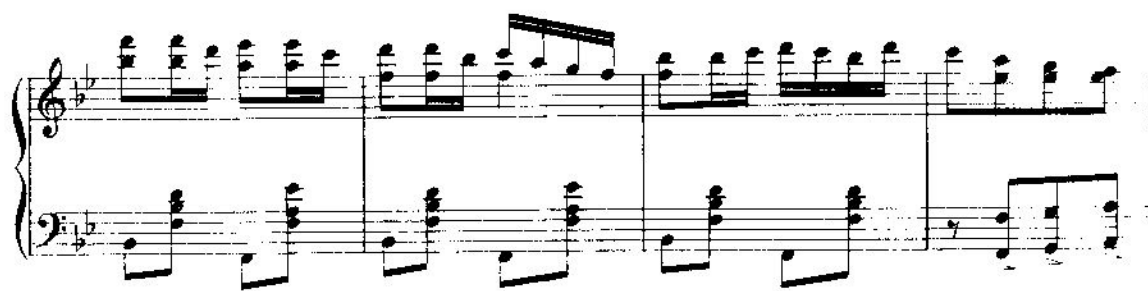
mf

f

Copyright MCMVI by JEROME H REMICK & Co.
Proprietors of
Detroit - The Whitney Warner Pub. Co. - New York.
Entered according to act of the Parliament of Canada in the year MCMVI
by Jerome H. Remick & Co., in the Department of Agriculture.

The image displays a page of musical notation, likely for a piano piece, consisting of five systems of staves. Each system contains a treble staff and a bass staff, both in a key signature of two flats (B-flat and E-flat). The notation includes various musical elements:

- System 1:** The treble staff begins with a forte (*ff*) dynamic marking. It features a series of eighth-note runs in the right hand and block chords in the left hand. A slur covers the first two measures of the right hand.
- System 2:** Continues the eighth-note runs in the right hand and block chords in the left hand.
- System 3:** Similar to the previous systems, with eighth-note runs in the right hand and block chords in the left hand. A slur covers the first two measures of the right hand.
- System 4:** The right hand continues with eighth-note runs. The left hand features block chords. The system concludes with a first ending (marked '1') and a second ending (marked '2').
- System 5:** The right hand features a series of sixteenth-note runs. The left hand continues with block chords. A forte (*f*) dynamic marking is present at the beginning.



This page contains six systems of musical notation for a piano piece. Each system consists of a treble staff and a bass staff. The key signature is one flat (B-flat). The first system begins with a forte (*ff*) dynamic marking, followed by a mezzo-forte (*mf*) marking. The fourth system is marked *8va ad lib.* and begins with a forte (*ff*) dynamic. The sixth system ends with a forte (*f*) dynamic. The notation includes various musical symbols such as notes, rests, beams, and slurs, indicating a complex and expressive piece.