

THE GREATEST DESCRIPTIVE BALLAD SUCCESS OF THE CENTURY.

# A ROSE WITH A BROKEN STEM.



AS SUNG WITH SUCCESS BY



EDITH PALMER



WORDS BY CARROLL FLEMING  
MUSIC BY EVERETT J. EVANS.

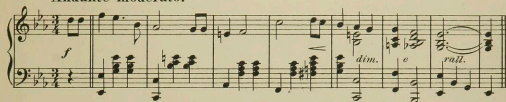
PUBLISHED BY  
FEIST & FRANKENTHALER  
LONDON, ENGL.  
B. FELDMAN, - 5 BERNERS ST. W.  
56 WEST 28th ST.  
NEAR BROADWAY, NEW YORK  
HAROLD C. WHALLEY, ROYCE & CO. N.Y.

# "A ROSE WITH A BROKEN STEM."

Words by CARROLL FLEMING.

Music by EVERETT J. EVANS.

*Andante moderato.*



The first system of the song features a vocal melody in the treble clef and piano accompaniment in the bass clef. The key signature has two flats (B-flat major) and the time signature is 3/4. The piano part includes a piano (*p*) dynamic marking. The lyrics are:
   
1. At a gay mas-que - rade in a ball room grand, two
   
2. When the mask fell a - way from the gip - sy's brow, they

The second system continues the vocal melody and piano accompaniment. The lyrics are:
   
beau - ti - ful maids were there, And
   
knew what the Rose had done, For

one bore a rose in her jewelled hand, the oth-er a lil-y  
she had been false to the sa-cred vow, she gave to the gip-sy's

fair, "The Rose shall be queen" then the dan-cers said, the  
son, Her heart she had sold for a mis-ers gold, a

Lil-y turned a-way, But the beau-ti-ful Rose sad-ly  
mi-ser old and gray, And the bells that had rung for her

bowed her head, as she heard an old gip-sy say:  
wed-ding tolled, for the lad that had passed a way.

"A Rose with a broken stem"

## "HUNKY DORY."

THE LATEST HIT BY THE COMPOSER OF  
SMOKY MOKES and CALANTHE WALTZES.

# REFRAIN.

Lento.

5

She's just like a rose with a brok - en stem, that is plucked and then cast a - side, — The

*p* *La \** *La \** *La \** *La \**

garden of love has no place for them, when their fragrance and perfume have died, — For you

*cresc.*

can't take the stain from a woman's name, Nor a - flaw from the pur - est gem, — She

*f*

choos - es her path, and must bear the blame, She's a rose with a bro - ken stem. —

*deciso.* *La \** *rall.*

"A Rose with a broken stem?"

## "HUNKY DORY."

THE LATEST HIT BY THE COMPOSER OF  
SMOKY MOKES and CALANTHE WALTZES.