

HAMLIN & MITCHELL'S  
STUPENDOUS EXTRAVAGANZA AS PRODUCED  
AT THE GRAND OPERA HOUSE, CHICAGO.

# BADES IN TOY LAND

BOOK AND LYRICS BY  
GLEN MAC DONOUGH  
Music By

## VICTOR HERBERT

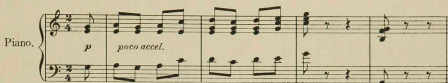
I Can't Do the Sum .....	50
With Downcast Eye .....	50
The Health Food Man .....	50
Floretta .....	50
Before and After .....	50
Toyland .....	50
If I Were a Man Like That .....	50
Go to Sleep, Slumber Deep. Lullaby .....	50
The Men .....	50
Never Mind, Bo-Peep, We Will Find Your Sheep .....	60
Jane .....	50
Military Ball (Instrumental) .....	50
March of the Toys (Instrumental) .....	50
The Moon Will Help You Out .....	50
Barney O'Flynn .....	50
Selection .....	1.00
March .....	50
Waltzes .....	75
Lancers .....	50
Score .....	2.00 Net
Gems .....	50 Net



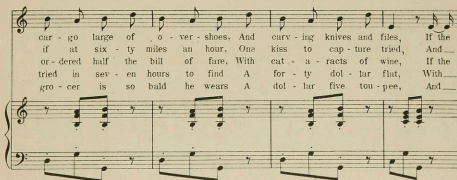
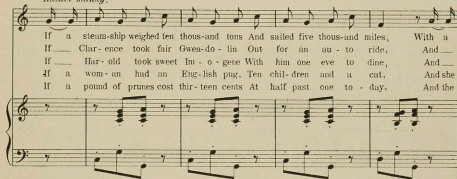
# I Can't Do The Sum.

Lyric by  
GLEN MAC DONOUGH.

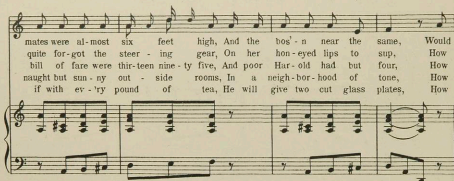
Music by  
VICTOR HERBERT.



*Rather slowly.*

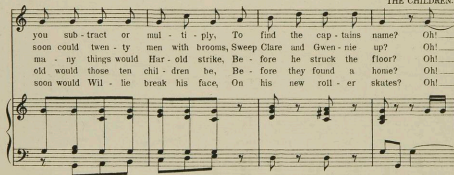


Copyright MCMIII by M. Witmark & Sons.  
International Copyright Secured.



mates were al-most six feet high, And the bog'-n near the same, Would  
quite for-got the steer-ing gear, On her hon-eyed lips to sup, How  
bill of fare were thir-teen nine-ty five, And poor Har-old had but four, How  
naught but sun-ny out-side rooms, In a neigh-bor-hood of tone, How  
if with ev-ry pound of tea, He will give two cut glass plates, How

## THE CHILDREN.



you sub-tract or mul-ti-ply, To find the cap-tains name? Oh! —  
soon could twen-ty men with brooms, Sweep Clare and Gwen-nie up? Oh! —  
ma-ny things would Har-old strike, Be-fore he struck the floor? Oh! —  
old would those ten chil-dren be, Be-fore they found a home? Oh! —  
soon would Wil-lie break his face, On his new roll-er skates? Oh! —



Oh! — Oh! —  
Oh! — Oh! —  
Oh! — Oh! —  
Oh! — Oh! —  
Oh! — Oh! —

(on slate)

Put down six and car - ry two,

*pp*

(on slate)

Gee! but this is hard to do; You can think and

(on slate)

think and think Till your brains are numb, I don't care what

teach - er says, I can't do the sum. sum.

*p* *sfz* *sfz*