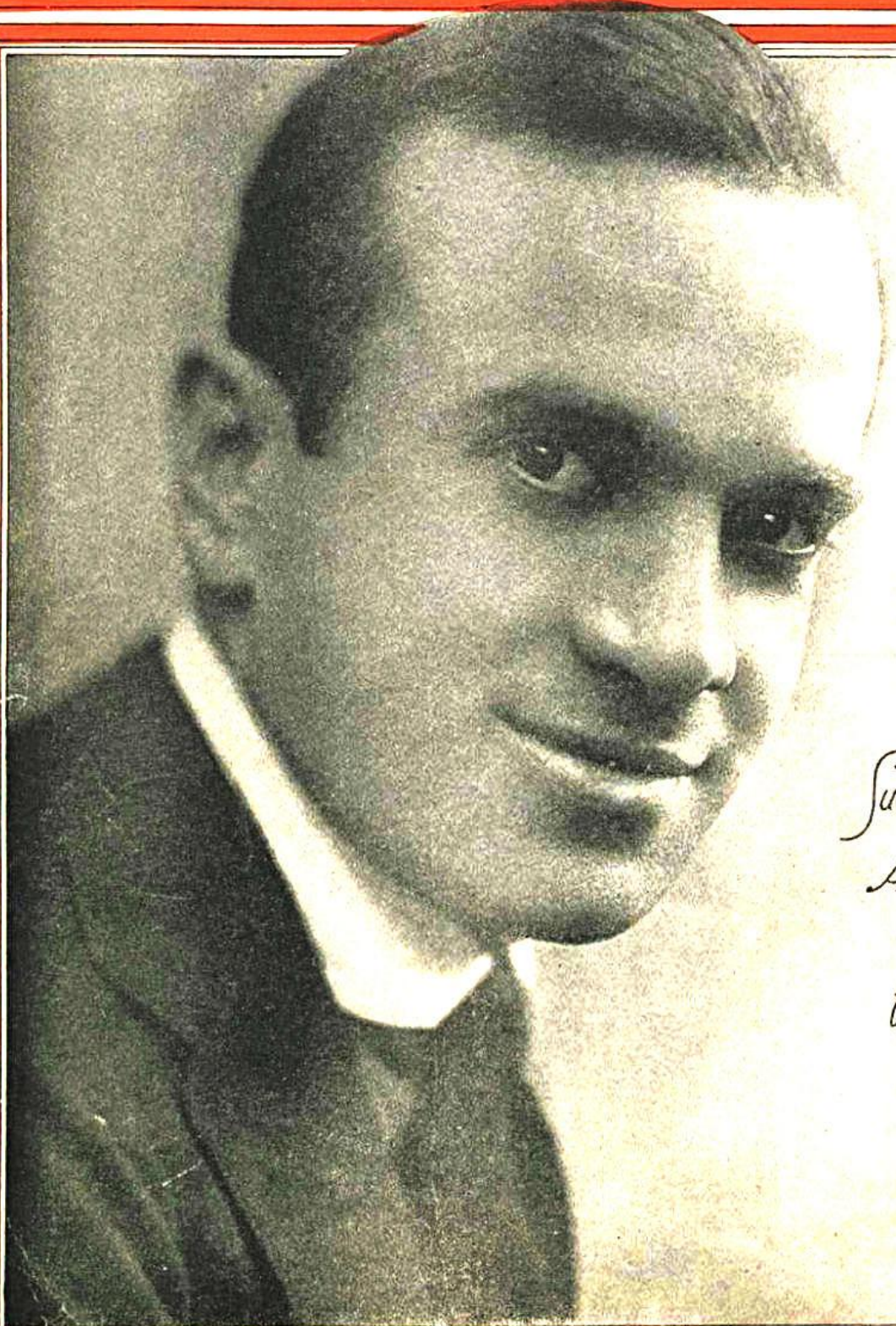


SWANEE

WORDS BY I. CAESAR MUSIC BY GEORGE GERSHWIN



*Successfully Introduced
by
AL JOLSON
in
"SINBAD"
at the
Winter Garden
New York*

6

T. B. HARMS
AND
FRANCIS, DAY & HUNTER
NEW YORK

Swanee

Words by
I. CAESAR

Music by
GEORGE GERSHWIN

Allegro moderato

Piano

The piano introduction consists of two staves in 2/4 time, key of B-flat major. The right hand features a melodic line with eighth notes and quarter notes, while the left hand provides a harmonic accompaniment with chords and eighth notes. Dynamics include *f sfz* and *p*.

I've been a - way from you a long time — I nev - er

The piano accompaniment for the first vocal line features a steady eighth-note bass line in the left hand and chords in the right hand. Dynamics include *mf*, *sfz*, and *mf*.

thought I'd miss you so — Some - how I feel

The piano accompaniment for the second vocal line continues with the eighth-note bass line and chords. Dynamics include *p* and *sfz*.

Your love was real Near you I long to be —

The piano accompaniment for the third vocal line features a more active right hand with sixteenth-note passages and chords. Dynamics include *sfz*.

mf

The birds are sing-ing It is song-time — The ban-jos

mf *sfz* *mf*

strum-min' soft and low — I know that you Yearn for me

too Swan - ee You're call - ing me.

pp *dolce*

Refrain

Swan - ee How I love you How I love you My

sfz *sfz*

dear old Swan-ee ——— I'd give the world to be

sost.

A-mong the folks in D-I-X-I-E-ven know my

dim.

Mam - my's Wait-ing for me Pray-ing for me Down by the

sfz

sfz

Swan-ee ——— The folks up north will see me no more ——— When

(Spoken)

I go to the Swan-ee shore — (I'll be hap-py I'll be hap-py)

Trio *mp-f*

Swan-ee — Swan-ee — I am com-ing back to

Swan-ee — Mam-my — Mam-my —

I love the old folks at home. ¹ home. ²