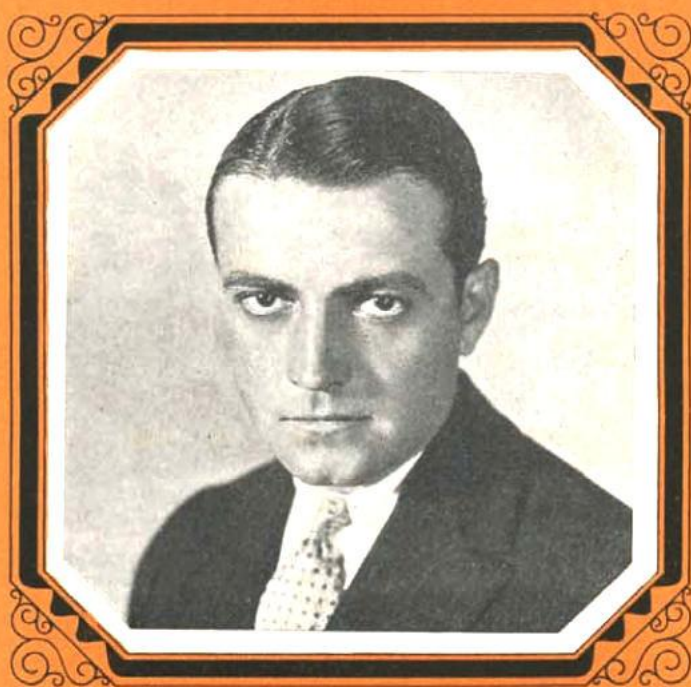


# WEARY RIVER

FEATURED IN  
RICHARD BARTHELMESS'  
GREATEST PRODUCTION  
"WEARY RIVER"



A FIRST NATIONAL VITAPHONE PICTURE

WORDS BY  
GRANT CLARKE

MUSIC BY  
LOUIS SILVERS

CODE WORD  
"WEARY"

Irving Berlin, Inc.  
MUSIC PUBLISHERS  
1607 Broadway New York



MAGN  
EFG  
A

# Weary River

Words by  
GRANT CLARKE

Tune Ukulele  
or Banjulele Banjo  
A D F# B  
Put Capo on 1st fret

Music by  
LOUIS SILVERS

Moderato

VOICE

Po-ets say our lives are like the

*Vamp*

Ukulele Arr. by  
MAY SINGHI BREEN

Copyright 1929 by IRVING BERLIN, Inc., 1607 Broadway, N. Y.

International Copyright Secured

Made in U.S.A.

All Rights Reserved

riv-ers that flow They sure-ly know true Ev-'ry one a diff-'rent kind of

stream so they say All on our way too Here's a rag-ing tor-rent met

Dash-ing on strong Here's a peace-ful riv-u-let bub-bling a-long.

CHORUS

I have been ... just like a wear - y riv - er that keeps

wind - ing end - less - ly

Fate has been a ver - y cheer - ful giv - er to most

ev - 'ry one but me

Oh how long it took me to learn —

Hope is strong and tides have to turn — And

now I know that ev-'ry wear-y riv - er Some day

meets the sea. — sea. —