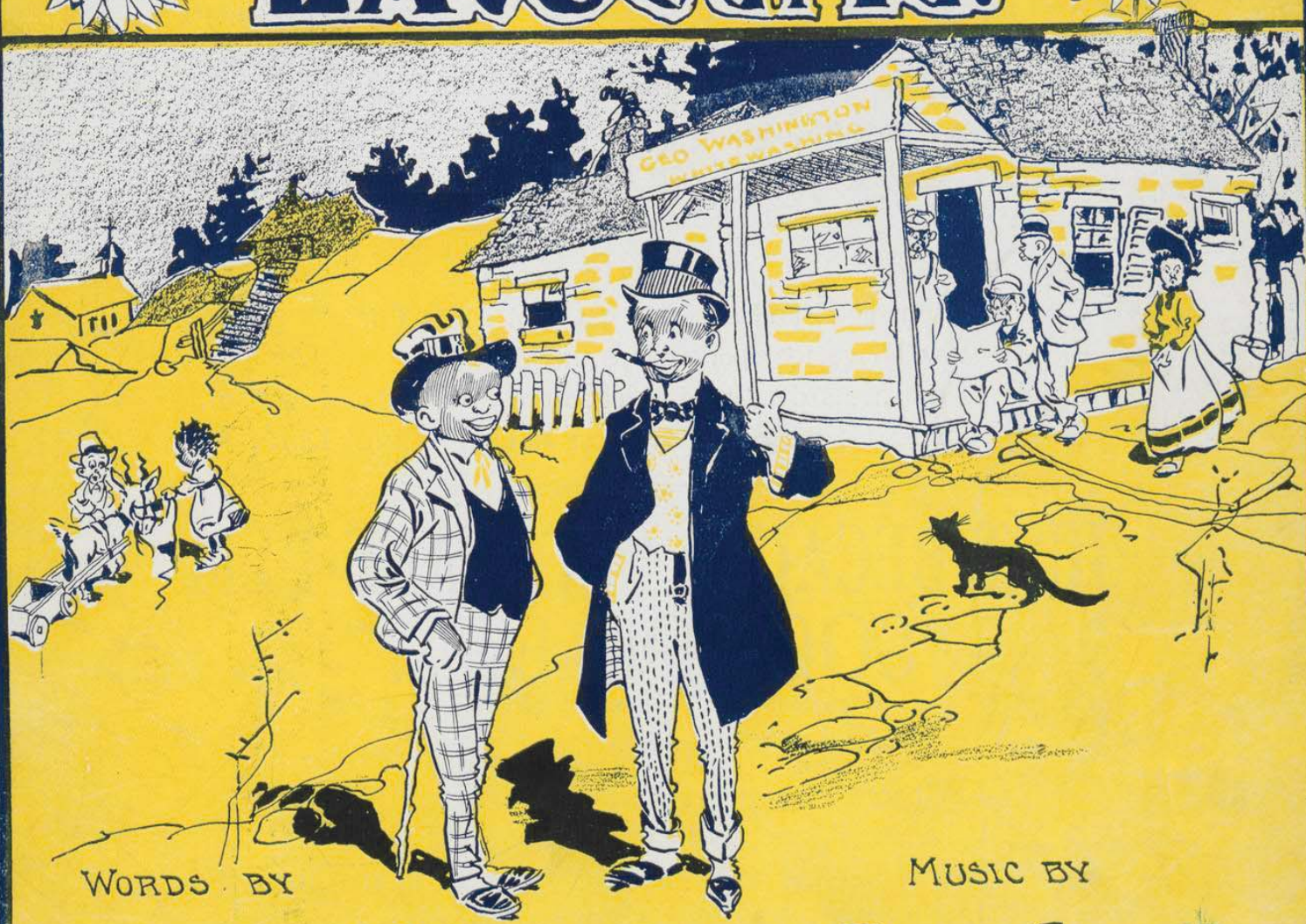


IF THAT'S SOCIETY, EXCUSE ME.

B6276
10



WORDS BY

MUSIC BY

ROSAMOND JOHNSTON.

BOB COLE.

5

HOWLEY, HAVILAND & DRESSER
1234 1234 Broadway
New York

Best Cobb



IF DAT'S SOCIETY EXCUSE ME.

Words by
BOB COLE & WILL JOHNS.

Music by
ROSAMOND JOHNSON.

Miss Em - e - li - na Jack-son in the cho - co - late so - ci - e - ty of
Miss Em - e - li - na ver - y soon be - gan to re - a - lize that he was

Dark - town was the queen, — She had a dis - tant rel - a - tive who
sad - ly out of place, — She looked up - on her coun - try kin whom

Copyright, MCM, by Howley, Haviland & Dresser.
English Copyright Secured.

lived way down in Dix - ie whom she had nev - er seen. She
she was en - ter - tain - ing, a frown up - on her face. The

heard that he was com - ing so she sent out in - vi - ta - tions to Dark - town's swellest
guests be - gan to gig - gle when they saw the sit - u - a - tion Miss Em - e - line felt

set, The night Miss Em - e - li - na en - ter - tained her coun - try cousin she
sad; She went and told the darkey he must put on so - cial manners, and

nev - er will for - get. The dark - ies came in full dress suits, with
then the coon got mad. He spit to - bac - co on the floor, that

low neck gowns, and pat-ent leather boots, And all the sty - lish at - tri - butes, The
made Miss Em - e - li - na ver - y sore, And then she showed him to the door; To

coun - try dark - ey watched ex - cit - ed - ly Each swal - low tail and low cut vest, Each
leave the place the coon would not a - gree; Just then they passed re - freshments light, To

la - dy with un - cov - ered chest, He said "Em - e - line dese folks aint dressed," She
take small bits of course was right, This dark - ey he grabbed every thing in sight. She

said "that's what they call so - ci - e - ty" The dark - ey scratched his head, And
said "you have disgraced so - ci - e - ty" The dark - ey scratched his head, And

rit.

REFRAIN.

then to her he said: Well! If dat's so - ci - e - ty ex - cuse _____
 then to her he said: Well! If dat's so - ci - e - ty ex - cuse _____

rall. *p-ff*

me, You call dat pro - pri - e - ty you loose _____ me; _____
 me, You call dat pro - pri - e - ty you loose _____ me; _____

Where I come from a good ness knows, Folks dey put on a few mo' clo'es;
 When you give me a so cial treat You must give me e nough to eat;

1. If dat's so - ci - e - ty ex - cuse _____ me. _____ me. _____
 If dat's so - ci - e - ty ex - cuse _____ me. _____ me. _____

fz