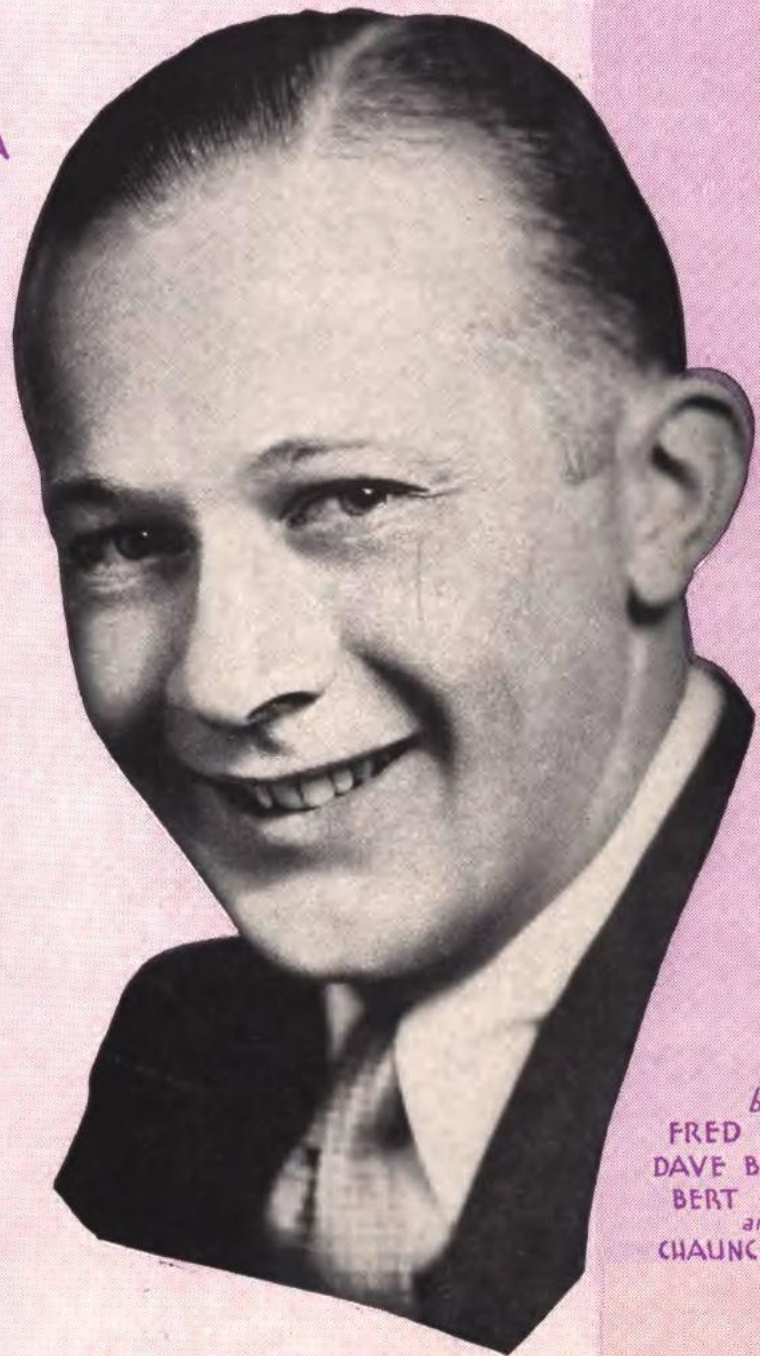


BYE BYE BLUES

signature song of
BERT LOWN
and his
HOTEL BILTMORE ORCHESTRA



by
FRED HAMM
DAVE BENNETT
BERT LOWN
and
CHAUNCEY GRAY



Irving Berlin, Inc.
MUSIC PUBLISHERS
1607 Broadway New York

Bye Bye Blues

Tune Ukulele
or Banjulele Banjo

G C E A

By FRED HAMM
DAVE BENNETT
BERT LOWN &
CHAUNCEY GRAY

Moderato

Piano

The piano introduction consists of two staves. The right hand starts with a treble clef, a key signature of one sharp (F#), and a 2/4 time signature. It features a series of chords and melodic lines. The left hand starts with a bass clef and provides a rhythmic accompaniment with eighth and sixteenth notes. A dynamic marking of *f* (forte) is present.

The piano continuation consists of two staves. The right hand continues with chords and melodic lines. The left hand continues with a rhythmic accompaniment. A dynamic marking of *f* is present.

Voice

I got a

VAMP

p

The first vocal line is on a single staff with a treble clef. The lyrics are "I got a". Above the staff is a guitar chord diagram. Below the staff is a piano accompaniment consisting of two staves. The right hand has a treble clef and the left hand has a bass clef. The piano part includes a section labeled "VAMP" with a dynamic marking of *p* (piano).

big sur-prise, when I saw you smile — I nev - er

The second vocal line is on a single staff with a treble clef. The lyrics are "big sur-prise, when I saw you smile — I nev - er". Above the staff are four guitar chord diagrams. Below the staff is a piano accompaniment consisting of two staves. The right hand has a treble clef and the left hand has a bass clef.

Ukulele Arr.by
MAY SINGHI BREEN

Copyright 1930 by IRVING BERLIN Inc., 1607 Broadway, N. Y. C.

dreamed that it could be

But now I re - al - ize since I saw you smile, —

There's on - ly hap - pi - ness for me. So

CHORUS

BYE BYE BLUES

p-f

BYE BYE

BLUES Bells ring,

birds sing Sun is shin - ing

No more pin - ing Just we

two Smil - ing

This system contains the first four measures of the piece. The vocal line features a long note for 'two' followed by 'Smil - ing'. The piano accompaniment consists of a treble and bass clef with various chords and melodic lines.

thru Don't sigh,

This system contains the next four measures. The vocal line continues with 'thru Don't sigh,'. The piano accompaniment continues with similar harmonic and melodic patterns.

Don't cry, BYE BYE

This system contains the next four measures. The vocal line concludes with 'Don't cry, BYE BYE'. The piano accompaniment features more complex chordal textures.

1 2
BLUES. BLUES.

This system contains the final four measures, marked with first and second endings. The vocal line says 'BLUES. BLUES.'. The piano accompaniment includes a double bar line and repeat signs.