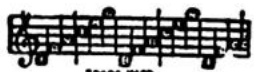


SONGS OF YESTERDAY

I'm Looking For A Daddy Long Legs

FROM THE
MUSIC BOX REVUE
1922-1923

Words and Music by
IRVING BERLIN



IRVING BERLIN Inc.
Music Publishers
799 SEVENTH AVE., NEW YORK, N.Y.

MADE IN
U.S.A.

I'm Looking For A Daddy Long Legs

By IRVING BERLIN

Piano introduction in G major, 7/8 time. The piece begins with a forte (*f*) dynamic. The right hand features a rhythmic pattern of eighth and sixteenth notes, while the left hand provides a steady bass line. A *sfz* (sforzando) dynamic is used for a chordal flourish. The introduction concludes with a *Vamp* section marked *mf* (mezzo-forte), consisting of a repeating rhythmic pattern.

I'm so wor-ried, Oh so wor-ried, I can't sleep a wink at night,— I've

Piano accompaniment for the first line of lyrics. The right hand plays chords and moving lines, while the left hand continues the bass line. The dynamic is marked *p* (piano).

lost my appe - tite— and its all on ac-count_ of my height,

Piano accompaniment for the second line of lyrics. The right hand features more complex chordal textures and melodic lines, including a trill in the final measure. The left hand maintains the bass line.

I'm a Yan-kee, long and lan-ky and that's where the trou-ble lies, — For a

lit-tle lov-in' my heart cries — But I can't find a man my size —

rall.

CHORUS

I'm look-ing for a Dad-dy Long - legs Who's gon-na mea-sure up to me — A

pf

lit-tle fel-low has the wrong legs to have me sit-ting on his knee, I had a

sweet-heart short and thin And when the spoon-ing would be -

gin, He was there stand - ing on a chair But he'd

on - ly get as far as my chin, I want a dad - dy who can

teach me the kind of love I can't re - sist — I

want a dad - dy who can reach me When I get read - y to be

kissed I want a nice young man to woo me But I

don't want a man that has to climb up to me Its gon - na take a dad - dy

long - legs_ to love a long - leg - ged la - dy like me _____ me _____